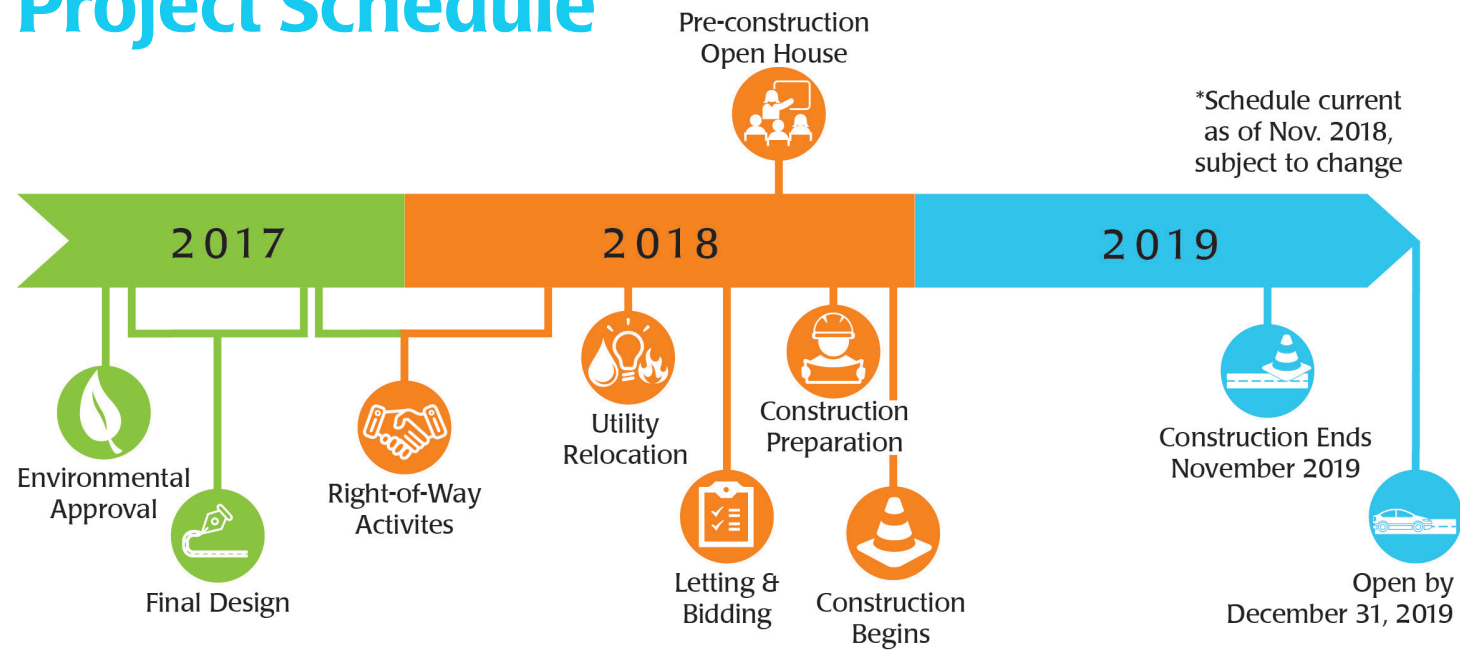


## Project Schedule



# Typical Roadway Cross Section

## 108th Street



## Contact Us



**Luke Jager**  
City of Omaha  
Project Manager  
1819 Farnam Street, Suite 600  
Omaha, NE 68183  
(402) 444-6960 | [Luke.Jager@cityofomaha.org](mailto:Luke.Jager@cityofomaha.org)

**Tom Crockett**  
Hawkins Construction Company  
(402) 342-1607 | [tcrockett@hawkins1.com](mailto:tcrockett@hawkins1.com)

**Jon Mooberry**  
JEO Consulting Inc  
(402) 443-7487 | [jmooberry@jeo.com](mailto:jmooberry@jeo.com)



# 108th Street Widening Madison Street to 'Q' Street

## Omaha, NE

Public Pre-construction Open House | Tuesday, November 13th | 6:30-8:00 pm

# Welcome!

## Meeting Schedule

**6:30 P.M. - Doors open to the public**

**6:45 P.M. - Brief presentation followed by open house**

**8:00 P.M. - Open House ends**

## Meeting Purpose

The purpose of tonight's open house is to keep you informed of the upcoming improvements to 108th Street between Madison Street and 'Q' Street. This project will widen 108th Street from a 2-lane roadway section to a 4-lane section, with dedicated turning lanes. City staff and design team members are on-hand tonight to discuss the project schedule and construction phasing.



Thank you for attending tonight's open house. You can stay informed about the project by signing up for notifications at [www.KeepOmahaMoving.com](http://www.KeepOmahaMoving.com)



U.S. Department  
of Transportation  
**Federal Highway  
Administration**



**Current Daily  
Traffic**  
**23,998**  
vehicles



**Projected  
2040 Traffic  
26,000  
vehicles**

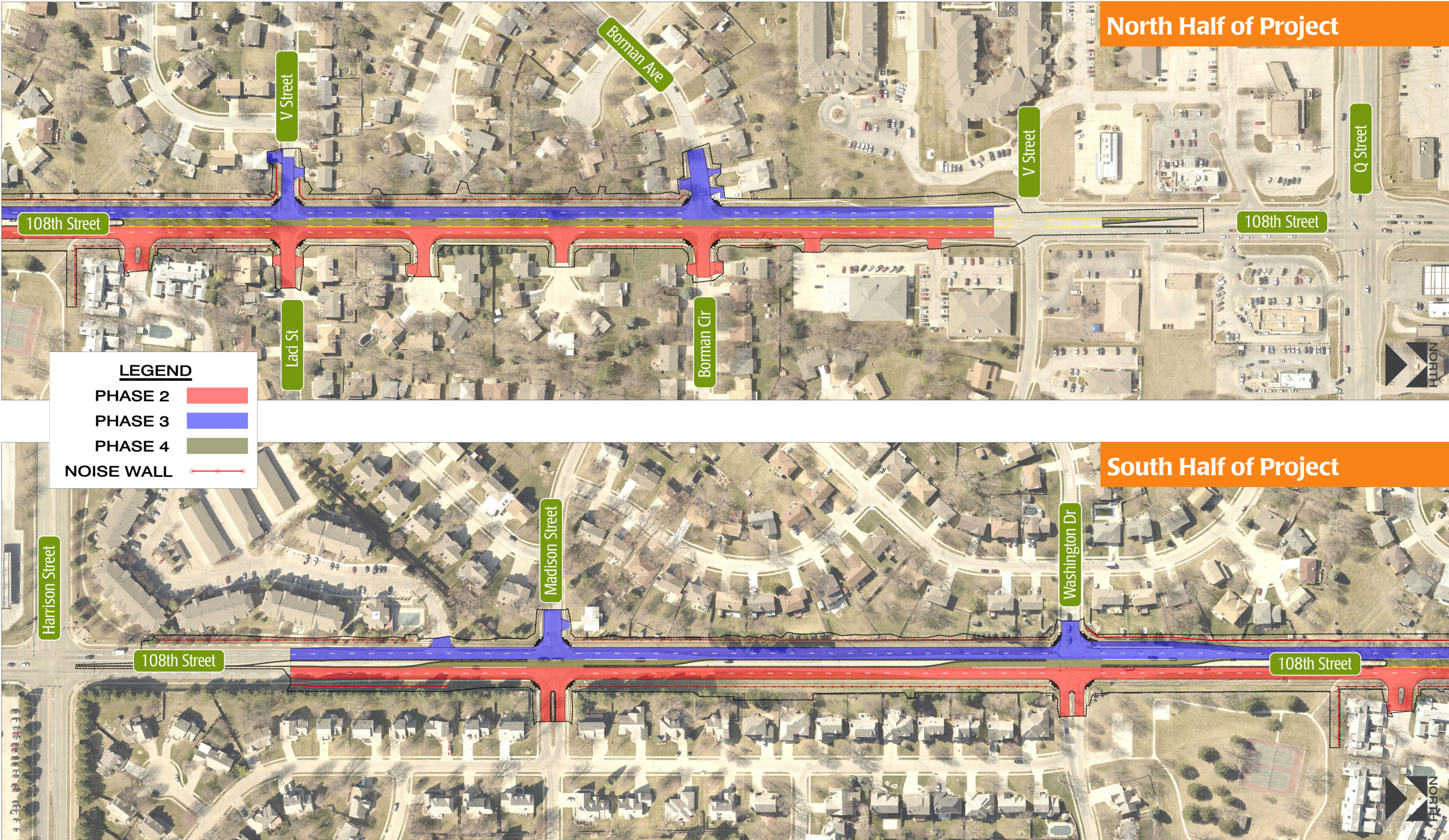


**Estimated  
Construction Cost  
\$8.9 Million**  
(Total Project Cost \$9.6 Million)





# Construction Phasing



## Residential Services During Construction

No disruption to trash collection, mail delivery, and emergency response services is anticipated during the construction of this project. Should the trash collection be impeded, the Contractor would be responsible for hauling residential trash to where it can be collected.

**Phase 1**  
Phase 1 is not shown on the adjacent figure, but will consist of storm sewer work and paving of temporary surfaces in order to accommodate shifts in traffic during later construction phases. Wall construction may begin in Phase 1 with the approval of the Engineer. 108th Street will remain open in both directions during Phase 1, with the exception of closures at Madison Street and Borman Avenue, each of which will last no longer than 3 consecutive days. These two separate closures will be scheduled at least a week apart and will occur over the weekend when traffic volumes are lower.

**Phase 2**  
During Phase 2, the east side of 108th Street will be closed for construction. 108th Street will remain open in both directions but will be shifted to head-to-head traffic on the west side of 108th Street. Sideroads will be constructed half at a time to maintain traffic. Laci Street will be closed to through traffic for a two week period while school is on summer break.

**Phase 3**  
During Phase 3, the west side of 108th Street will be closed for construction. Traffic on 108th Street will remain open in both directions but will be shifted to head-to-head traffic on the east side of 108th Street. Sideroads will be constructed half at a time to maintain traffic. "V" Street and Borman Avenue will be closed to through traffic for a two week period while school is on summer break.

**Phase 4**  
During Phase 4, construction of center lanes and medians will occur in the central portion of 108th Street. Traffic will remain open in both directions on 108th Street but will be shifted to the outside lanes .